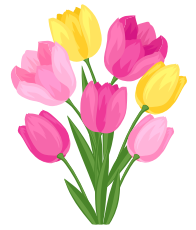




# MAY 2025 NEWSLETTER



## SPRING YARD WASTE PICKUP

Yard waste, including leaves, should be placed at the curb in paper yard waste bags for pickup by the Department of Public Works (DPW). City of Portland residents may also self-haul leaves to the compost pile behind the horse arena at Bogue Flats at any time. **Loose leaf pickup will resume in the fall.**

### BRUSH PICKUP SCHEDULE

The City is split into two brush pickup areas. Area 1 includes all properties east of the Grand River and south of Grand River Avenue, with pickup on the **first and third Monday** of each month. Area 2 covers the rest of the city, with pickup on the **second and fourth Monday** of each month. A map of these areas is available online at <https://www.portland-michigan.org/345/Brush-Pickup-Yard-Clean-Up>. Brush can be set out starting the Friday before your scheduled pickup, but it must be at the curb by 7:00AM on pickup day. Per City ordinance, all brush should be placed in the curb lawn and not in the roadway.



### BRUSH REQUIREMENTS

Brush should be stacked neatly at the curb with cut ends facing the same direction. Piles must be no longer than 8 feet, and branches should be no more than 6 inches in diameter. Small branches and twigs shorter than 2 feet should be bundled, placed in biodegradable paper yard waste bags, or set in reusable containers (which will be returned). Stumps and root balls will not be collected, and brush should not be placed too close to fire hydrants, signs, trees, or other obstacles.

### SELF-HAUL OPTION

City residents may drop off brush Monday through Friday between 7:00AM and 3:00PM at the DPW Compound. This service is for routine yard maintenance only. It is not intended for lot clearing or contractor use.

## PORTLAND AMBULANCE EMERGENCY CARE PLAN



The Ambulance Department offers an Emergency Care Plan for the coverage period of July 1, 2025, through June 30, 2026, at a cost of \$60 per household. Enrollment is open from May 1, 2025, to June 30, 2025. Under this plan, all applicable insurances will be billed and any payments received will be accepted as full payment. The Membership Application and Agreement Form is available online at <https://www.portland-michigan.org/149/Ambulance-Department>.

## WASTEWATER SYSTEM IMPROVEMENTS

The City of Portland is making essential improvements to the wastewater system, which includes replacing two sanitary sewer crossings under the rivers. All businesses in the area will remain open during this project. Please continue supporting our local businesses while these important improvements are completed.

### GRAND RIVER TRAFFIC SHIFT

As part of this project, a traffic shift is in place at the intersection of Grand River Avenue and Kent Street. Some lanes are temporarily closed, and stop bars on Grand River Avenue have been adjusted to facilitate easier turns. This traffic shift is expected to last until mid to late May.



### WATER STREET CLOSURE AND DETOUR

In early May, construction will extend to the area north of Grand River Avenue, and Water Street will be closed. Traffic will be detoured to Quarterline Street. This detour is expected to last approximately three weeks.



## CITY OFFICES CLOSED FOR MEMORIAL DAY

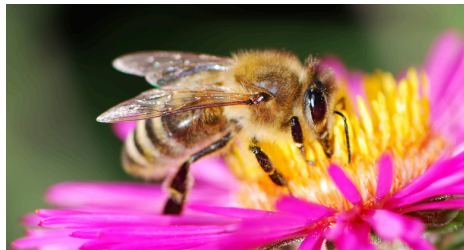
City offices will be closed on Monday, May 26, in observance of Memorial Day.

# PARKS, RECREATION, AND CEMETERY

## SUMMER REGISTRATION

Summer registration is now open! For more information or to register, visit [portlandmi.recdesk.com](http://portlandmi.recdesk.com).

- **T-BALL:** Ages 4-5 | Mondays & Wednesdays **OR** Tuesdays & Thursdays in June | R \$50/NR \$60 | **Deadline: May 19, 2025**
- **DK/K/1ST GRADE FLAG FOOTBALL:** Tuesdays & Thursdays in July | R \$50/NR \$60 | **Deadline: June 16, 2025**
- **TOT SOCCER CAMP:** Ages 3-6 | Monday-Wednesday, August 4-6 | \$45 (includes ball to keep) | **Deadline: July 21, 2025**
- **YOUTH SOCCER CAMP:** Tuesday-Thursday, July 22-24 | \$75 (includes camp shirt) | **Deadline: July 1, 2025**
- **SUMMER TENNIS:** Grades 1-12 | Starts in June | Days and cost vary | **Deadline: June 9, 2025** (for a shirt guaranteed!)



## NATURE THERAPY: BEEKEEPING

Join us on Tuesday, May 20, at 6:30PM at First Congregational Church for our second Nature Therapy program! Local beekeeper Will SaintAmour will discuss how to support honeybees and other pollinators, manage your own hive, and craft mead, a traditional fermented honey drink, at home.

*Designed to inform, inspire, and connect people with Portland's unique outdoor recreational opportunities, Nature Therapy events are free and open to all. Pre-registration is encouraged.*

## RPG NIGHT

Step into the world of role-playing games (RPGs) with a free beginner session on Saturday, May 10, from 5:30PM–8:30PM at First Congregational Church. Pre-registration is encouraged.



## PHOTOS WANTED

If you have photos from any Portland Parks & Recreation program, park, or trail, we'd love for you to share them! Send your pictures to [ejunge@portland-michigan.org](mailto:ejunge@portland-michigan.org) - you may see your photo featured in an upcoming post or newsletter. **Show us how you play, explore, and enjoy Portland!**

## SPLASH PAD OPENING MEMORIAL DAY WEEKEND

The Splash Pad at William Toan Park opens for the season Memorial Day weekend! It is open daily from 10:00AM-8:00PM, seven days a week - and it's free to use!



## PAVILION RENTALS

Reservations can be made up to one year in advance for the pavilions at Community Lake, Bogue Flats, Thompson Field, William Toan Park, Joe Tichvon Park, and the Red Mill. To make a reservation, visit [portlandmi.recdesk.com](http://portlandmi.recdesk.com).

## CEMETERY

Flowers not securely placed in an urn or in poor condition will be removed by cemetery staff. Reminder: Glass vases, urns, or other glass containers are not permitted.

# CITY MEETING SCHEDULE

- **City Council** meets at City Hall the first and third Monday of each month at 7:00PM. *City Council members are Mayor Jim Barnes, Mayor Pro-Tem Joel VanSlambrouck, Patrick Fitzsimmons, Amanda L. Johnston, and Erica Sheehan.*
- **Downtown Development Authority (DDA)** meets at City Hall on the fourth Monday of each month at 7:00PM.
- **Portland Area Fire Authority** meets at City Hall on the second Tuesday of each month at 6:00PM.
- **Zoning Board of Appeals** meets at City Hall on the second Monday of the month as needed at 7:00PM.
- **Planning Commission** meets at City Hall on the second Wednesday of each month at 7:00PM.
- **Parks Board** meets at City Hall on the third Thursday of each month at 5:30PM.
- **Board of Light & Power** meets at the Electric Department on the last Tuesday of each month at 4:00PM.
- **Mayor Barnes** is available to meet with citizens at City Hall on the Saturday following Council meetings from 9:00AM to 11:00AM.

## CONTACT US!

City of Portland  
259 Kent St., Portland, MI 48875

[www.portland-michigan.org](http://www.portland-michigan.org)

Phone: (517) 647-7531

Fax: (517) 647-2938

Hours: M-F, 8:00AM-4:30PM

Assessor	(517) 647-2943
Ambulance	(517) 647-2935
Cemetery & Parks	(517) 647-7985
City Clerk	(517) 647-3211
City Hall	(517) 647-7531
City Manager	(517) 647-2931
Code/Zoning	(517) 647-2931
DDA	(517) 647-5027
Electric	(517) 647-6912
Fire/Burn Permits	(517) 647-4111

Fire/Business	(517) 647-2950
Income Tax	(517) 647-2941
Police (Records)	(517) 647-2947
Police (NonER)	(517) 647-7521
Recreation	(517) 647-3207
Streets	(517) 647-6129
Wastewater	(517) 647-6926
Water	(517) 647-2948
Treasurer	(517) 647-2933
Utility Billing	(517) 647-3205